

Analytical and Bioanalytical Chemistry

Electronic Supplementary Material

In vitro prediction of the efficacy of molecularly targeted cancer therapy by Raman spectral imaging

Hesham K. Yosef, Laven Mavarani, Abdelouahid Maghnouj, Stephan Hahn,
Samir F. El-Mashtoly, Klaus Gerwert

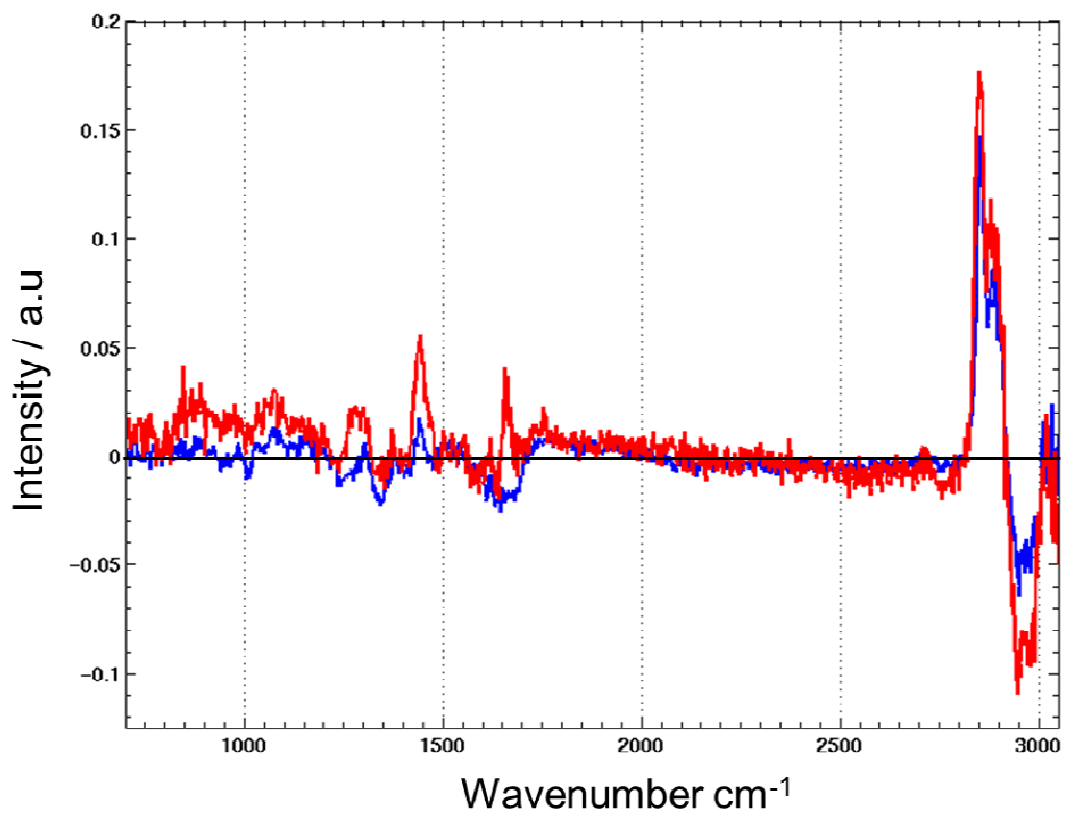


Fig. S1 Plot of paired loadings resulting from the principle component analysis of the membrane mean spectra of both control cells (red) and erlotinib-treated cells (blue)

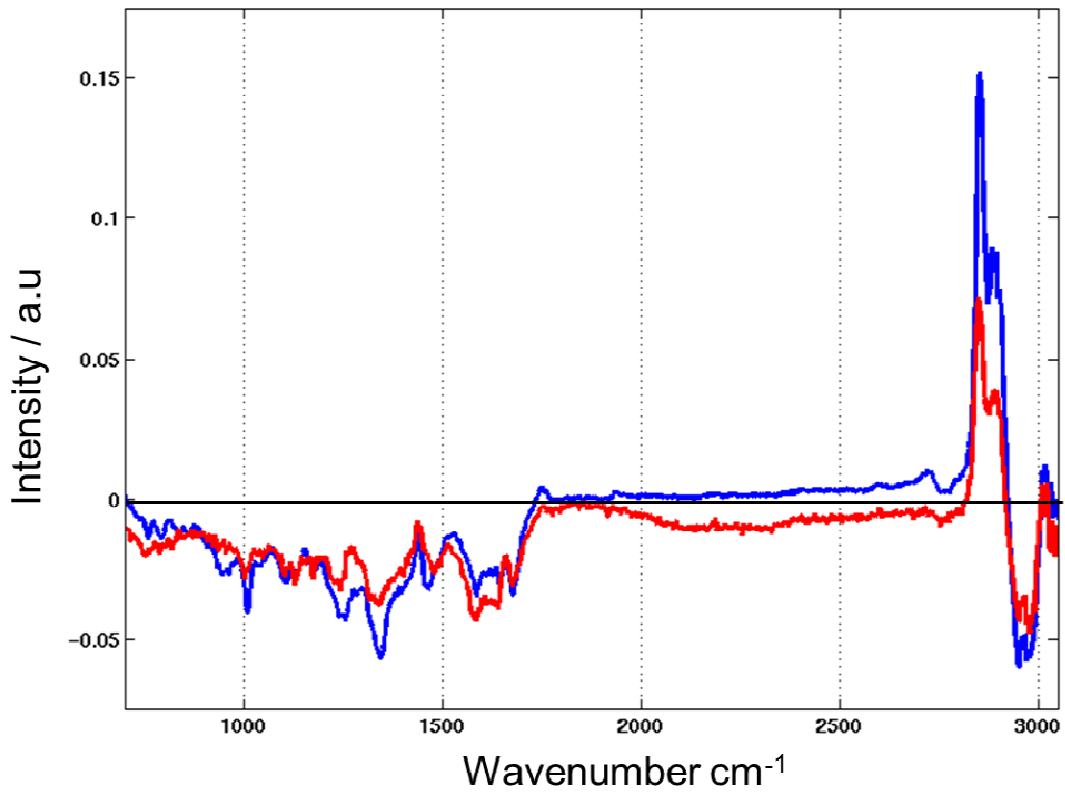


Fig. S2 Plot of paired loadings resulting from the principle component analysis of the cytoplasm mean spectra of both control cells (red) and erlotinib-treated cells (blue)

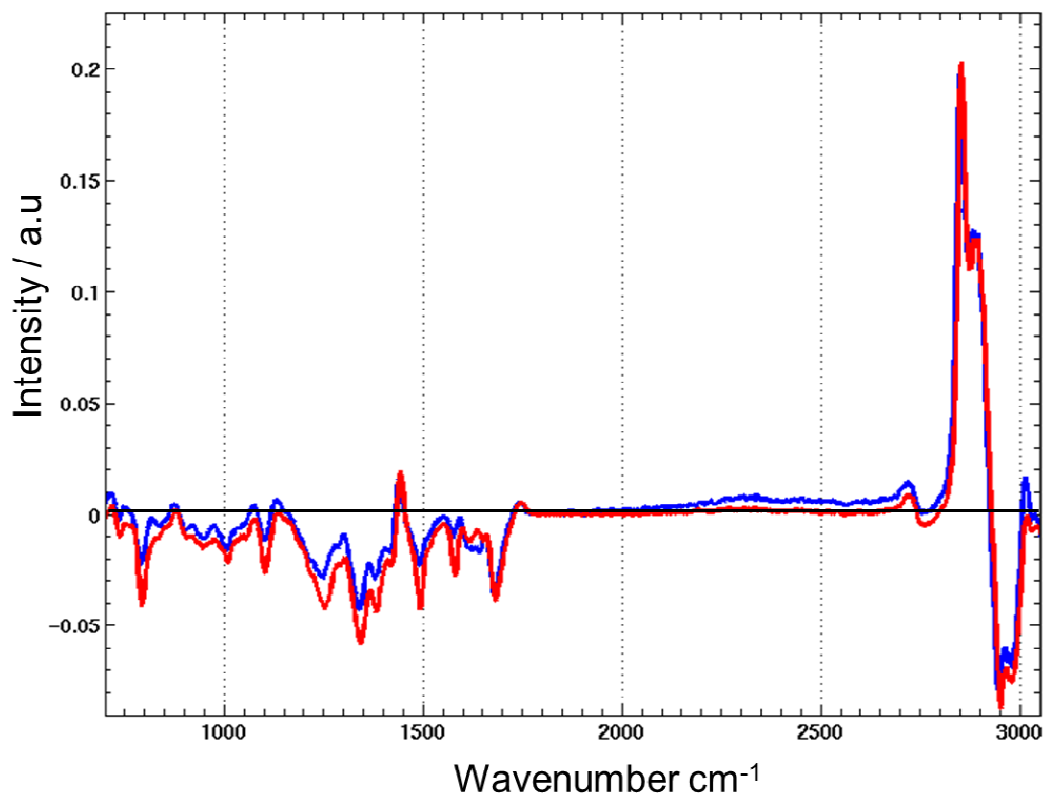


Fig. S3 Plot of paired loadings resulting from the principle component analysis of the nucleus mean spectra of both control cells (red) and erlotinib-treated cells (blue)

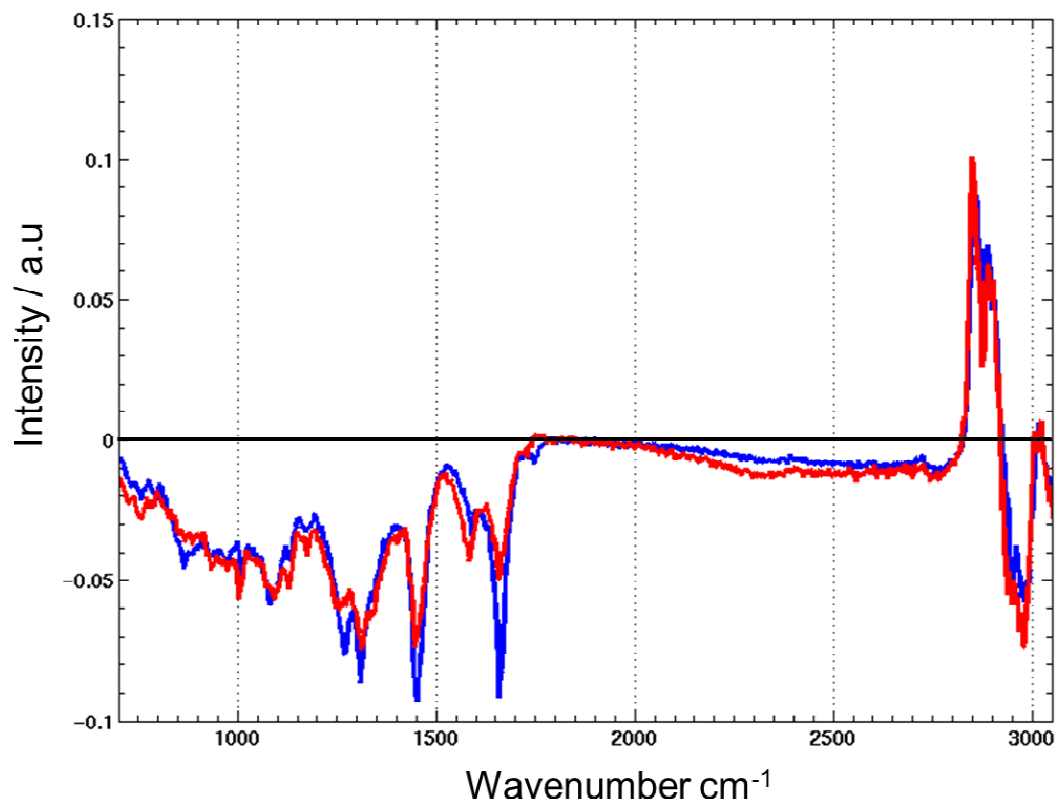


Fig. S4 Plot of paired loadings resulting from the principle component analysis of the lipid droplets mean spectra of both control cells (red) and erlotinib-treated cells (blue)